

ALTERNATORI MONOFASE - 2 Poli

SINGLE-PHASE ALTERNATORS - 2 Poles

K100
Brushless a condensatore
Brushless with Capacitor

KR100
A spazzole con AVR-d
Brush with AVR-d



Caratteristiche tecniche
K100
Tensione standard 50Hz: 230V, 240V 60Hz: 110/220V, 120/240V Altri valori a richiesta
Classe d'isolamento H
Protezione IP 23
T.H.D. ≤ 6%
Precisione tensione + 5%, - 10% (cosφ = 1)
Capacità di spunto (Icc > 3In)
Optional Quadro elettrico, Carica batterie
KR100
Tensione standard 50Hz: range 110÷120/220÷240V 60Hz: range 110÷120/220÷240V Altri valori a richiesta
Classe d'isolamento H
Protezione IP 23
T.H.D. ≤ 6%
Precisione tensione ± 2% (indipendentemente dal cosφ)
Capacità di spunto (Icc > 3In)
Optional Quadro elettrico, Carica batterie
Regolatore automatico di tensione digitale AVR-d

Technical characteristics
K100
Standard voltage 50Hz: 230V, 240V 60Hz: 110/220V, 120/240V Other voltages on request
Insulation class H
Protection IP 23
T.H.D. ≤ 6%
Voltage accuracy + 5%, - 10% (cosφ = 1)
Starting capacity (Icc > 3In)
Optional Electrical panel, Battery charger
KR100
Standard voltage 50Hz: range 110÷120/220÷240V 60Hz: range 110÷120/220÷240V Other voltages on request
Insulation class H
Protection IP 23
T.H.D. ≤ 6%
Voltage accuracy ± 2% (regardless of cosφ)
Starting capacity (Icc > 3In)
Optional Electrical panel, Battery charger
Digital Automatic Voltage Regulator AVR-d

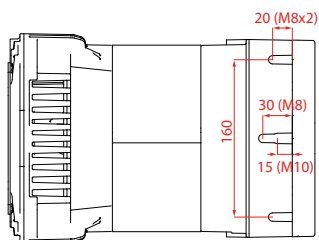
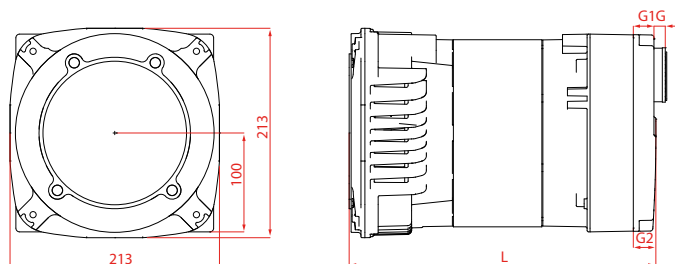
Modello Model	Potenza Output Power			Potenza assorbita Driving Power		Potenza Output Power			Potenza assorbita Driving Power		Peso Weight		
	cosφ 1		cosφ 0,8	4/4 - cosφ 1		cosφ 1		cosφ 0,8	4/4 - cosφ 1		cone	B34	SAE
	S1	S2	S1	[kW]	η %	S1	S2	S1	[kW]	η %	[kg]	[kg]	[kg]
	[kVA]	[kVA]	[kVA]			[kVA]	[kVA]	[kVA]					

	50Hz - 3000rpm					60Hz - 3600rpm							
	S1	S2	S1	[kW]	η %	S1	S2	S1	[kW]	η %			
K100 B	2,2	2,5	---	3,1	70,0	2,7	3,0	---	3,8	71,0	16,0	---	---
K100 C	2,7	3,0	---	3,8	71,0	3,5	3,8	---	4,9	72,0	17,0	---	---
K100 D	3,5	3,8	---	4,9	72,0	4,5	4,8	---	6,2	73,0	17,5	---	---
K100 E	4,2	4,5	---	5,8	73,0	5,5	6,0	---	7,4	74,0	20,0	---	---
K100 F	5,0	5,5	---	6,7	75,0	6,0	6,5	---	7,9	76,0	21,5	---	---
K100 FX	5,5	6,0	---	7,3	75,5	6,5	7,0	---	8,5	76,5	23,5	---	---
K100 G	6,0	6,5	---	7,9	76,0	7,2	7,7	---	9,4	77,0	25,0	---	---
KR100 D	3,5	3,8	2,8	4,9	71,0	4,2	4,5	3,3	5,8	72,0	17,5	---	---
KR100 E	4,2	4,5	3,3	5,8	72,0	5,0	5,5	4,0	6,8	73,5	20,0	---	---
KR100 FX	5,0	5,5	4,0	6,6	76,0	6,0	6,5	4,8	7,8	77,0	23,0	---	---
KR100 G	6,0	6,5	4,8	7,8	77,0	7,2	7,7	5,7	9,2	78,0	25,0	---	---

Dimensioni di ingombro

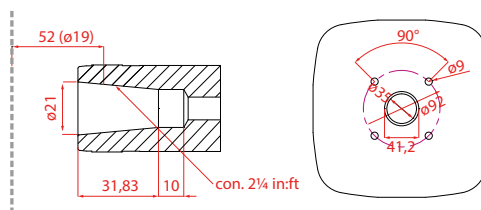
Overall Dimensions

CONE



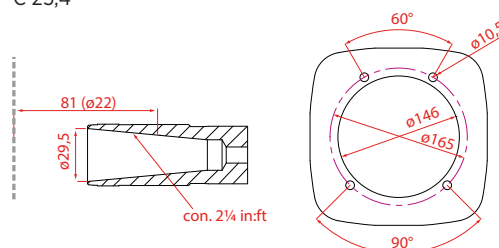
J609a

C 19

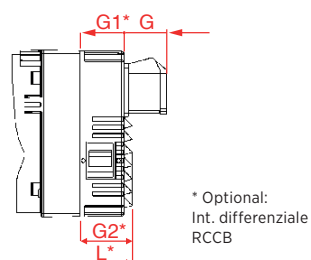
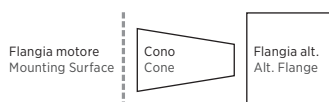
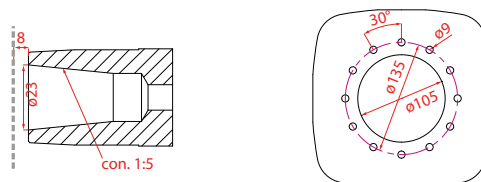


J609b

C 22
C 25,4



C 23



	L	G1	G2
	[mm]		
K100 B	299	*337	21 *53 25 *63
K100 C	299	*337	21 *53 25 *63
K-KR100 D	299	*337	21 *53 25 *63
K-KR100 E	314	*352	21 *53 25 *63
K100 F	324	*362	21 *53 25 *63
K-KR100 FX	339	*377	21 *53 25 *63
K-KR100 G	354	*392	21 *53 25 *63

Prese Sockets	G
	[mm]
Schuko	13
CEE 16A	55
CEE 32A	67
NEMA	1

Dati tecnici non impegnativi: NSM si riserva il diritto di apportare modifiche senza l'obbligo di darne preventiva comunicazione.

Technical data not binding: NSM reserves the right to modify the contents without prior notice.